



Road Safety – St Louise Primary

Thank you for your continued support in making the journey to and from school as safe as it can be for all our children. Please see below all road safety rules the school has in place to minimise issues. Could you also share this with anyone who drops off or picks up your child.

Drop Off

Our one-way drop off and pupil gate opens at 8.15am for pupils who are attending the school breakfast club only, all other pupils should arrive at school between 8.30am and 8.55am. Where possible children should walk to school or be dropped off near the school where they can make their way to school on foot to try and avoid any large gatherings within/near the school grounds. Only pupils should continue to enter through the pedestrian gate in the morning unless parents/carers need to speak with office staff and communication from parents/carers should come through the school office by phone or email where possible.

Parents/Carers who are in receipt of a blue badge which is clearly displayed in their car should follow the one way system in the morning and will be permitted to park in one of the spaces in the car park.

If you are travelling by car and using the drop off system on the ramp, I would ask that you are patient. Please ensure that you have passed the second gate before allowing your child to exit the vehicle, for safety reasons we also ask that you do not overtake other drivers on the ramp at any time. We need you to be vigilant and remember that there is a pedestrian crossing at this ramp and children will be crossing frequently.

As children arrive at school staff will be on hand to direct them. Children should enter the school playground and congregate at their door entrance and in the event of adverse weather, the doors will be open to allow children to go straight to class.

Pick Up

At the end of the school day we would advise that parents/carers where possible arrange to meet their children outside of the school grounds and walk to and from school. For those who this is not possible, we would ask that in the first instance you park in car parks away from the school and arrange to meet or walk to the school.

At the end of the school day parents/carers should make their way into the playground area opposite the main entrance. Once you have collected your child you should then make your way out of the exit gate next to the main car park gate.

We open the school car park and ramp to allow cars to park but ask that you remain next to your vehicle or wait in the designated pick up area and when your child is leaving the building you indicate to them where you are. All cars should be in the school car park by 2.50pm.

Please note that the main gates will be closed once the car park is full or by 2.50pm. After the SLC taxis have exited, the gates will remain closed until most classes have been dismissed.

P1-5 children will be dismissed through the dining room door with the exception of P6 and P7 who will leave via their classroom exit.

P1 will be dismissed before all other classes and will be brought to the front of the school to meet their parents/carers.

It is important that children have a clear understanding of the arrangements for pick up at home time.

Engine Idling

All schools in South Lanarkshire Council are 'No Idling Zones' and drivers are not permitted to park in the car park or leave a car with its engine running to drop off or pick up children.

Please support St Louise Primary's No Idling campaign and turn off your car while waiting to drop off or pick up your child. Together, we can make a real difference and improve the quality of air we all breathe.

Parking

The staff car park at the back of the school car park is for staff only and for safety and insurance purposes we only permit school staff to park beyond the designated staff parking sign.

To further ensure the safety of all children in the school car park at drop off and pick up times, we will be using cones to mark areas that are not designated for parking.

As you know pupil safety is a high priority for us and we would ask that you keep this in mind when dropping off or picking up your child at school. It is essential that parents/carers do not park or wait on the yellow zig-zag lines to ensure the safety of all of our children.

Please note that the zig-zag markings are there to indicate the length of road where you should not stop, not even to pick up or drop off children. These markings are provided outside schools to ensure our children can see and be seen clearly when crossing the road.

This also includes the yellow Box Junction at the front of the school gates, which should remain clear at all times.

Please do not walk your child through the vehicular entrance or across the car park. Always use the pathways and zebra crossings.

Could I please ask that whoever drops your child off and picks them up from school follows the safety guidance in place.

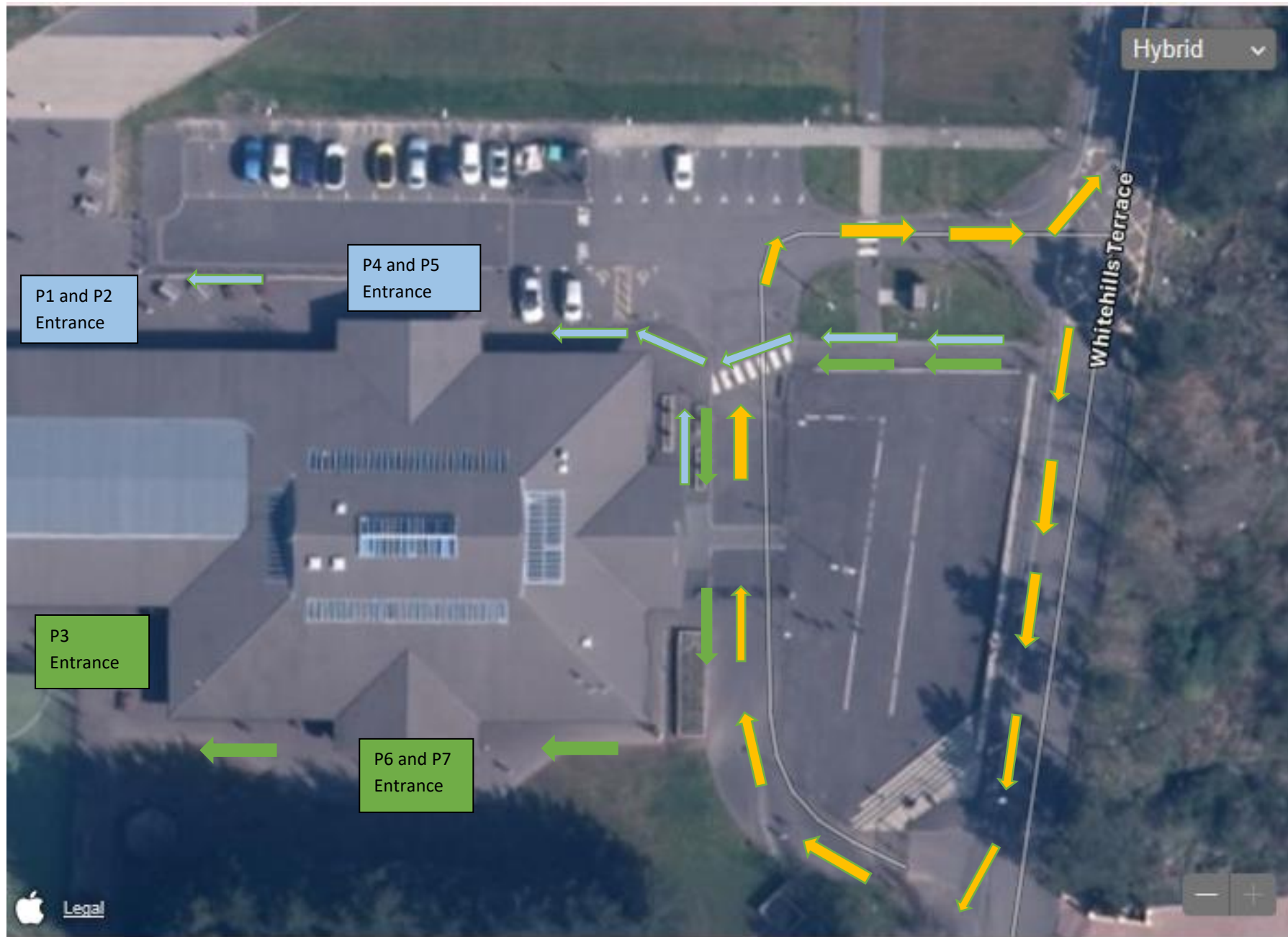
I would also ask that you limit your speed while in the school car park which is set to 5mph and be mindful of cars coming in or leaving the school.

We would appreciate your support with our road safety measures and school rules regarding parking.

Please find below maps showing our drop off and pick up guidance.



Drop Off Map for Start of School Day







One-way system for cars who are dropping children off

P1, P2, P4 and P5 pathway to entrance

P3, P6 and P7 pathway to entrance

One-way system and guidance must be followed at all times



-  waiting area for parents/carers who are on foot to collect children
 -  P1-5 dismissed from dining room
 -  P6 and P7 dismissal
 -  Parents/carers in vehicles remain beside their vehicle
- Guidance must be followed at all times**