



Dear Parent/Carer

Revised School Recovery Plan - 28th August 2020

Now that we have been back at school for just over two weeks we have reviewed our guidance and suggest the following going forward.

Drop Off and Pick Up

To support our effort to reduce congestion in and around the school I ask you to continue to follow the guidance in place at all times:

Drop Off

We will now be opening our one-way drop off and pupil gate at **8.30am** and children can arrive at school between **8.30am and 9.00am**.

In the first instance we are asking that where possible families make arrangements for children to walk to school or to be dropped off near the school where they can make their way to school on foot to try and avoid any large gatherings within/near the school grounds.

Only pupils should continue to enter through the pedestrian gate in the morning and communication from parents/carers should continue to come through the school office.

- Only staff and people who have an appointment with the school will be allowed to enter the car park, along with any authorised vehicles responsible for transporting children to school (such as taxis organised by SLC and those in receipt of a blue badge)
- Parents/Carers who are in receipt of a blue badge which is clearly displayed in their car should follow the one way system in the morning and will be permitted to park in one of the spaces in the car park
- If you are travelling by car and using the drop off system on the ramp, I would ask that you are patient. Please ensure that you have passed the second gate before allowing your child to exit the vehicle next to the main office door, **for safety reasons we also ask that you do not overtake other drivers on the ramp at any time**
- We need you to be vigilant and remember that there is a pedestrian crossing at this ramp and children will be crossing frequently
- In order to allow a steady flow and to avoid congestion, we would ask that cars are not double parked on Whitehills Terrace

School Website - <http://www.st-louises-pri.s-lanark.sch.uk/>

Twitter - @stlouiseprimary

School App -





- As children arrive at school staff will be on hand to direct them

Children should enter the school playground and congregate at their door entrance and in the event of adverse weather, the doors will be open to allow children to go straight to class

Pick Up

At the end of the school day we would advise that parents/carers where possible arrange to meet their children outside of the school grounds and walk to and from school.

For those who this is not possible, we would ask that in the first instance you park in car parks away from the school and arrange to meet or walk to the school.

If you need to use the school grounds to pick up your child please only send 1 adult to do this, **remembering to keep 2m apart from others.**

- At the end of the school day there will be a one-way flow in to and out of the playground for pick up. Parents/carers should enter by the top gate, make their way into the playground area opposite the main entrance and stand in one of the markings. Once you have collected your child you should then make your way out of the exit gate next to the main car park gate.
- We will open the school car park and ramp to allow cars to park but ask that you remain next to your vehicle or wait in the designated pick up area and when your child is leaving the building you indicate to them where you are.
- All children will be dismissed through the dining room door with the exception of P6 and P7 and a staggered approach used to enable continued adherence to the social distancing rules.
- 2.45pm All family groups, taxi groups and those attending a child minder will be dismissed along with P1 children
- 2.50pm P2 and P3 will be dismissed
- 2.55pm P4 and P5 will be dismissed
- 2.55pm P6 and P7 will be dismissed from their own door and will make their way round to the front door
- All children will use the safe crossings to make their way to their parents - children should not cross the main car park



- It is important that children have a clear understanding of the arrangements for pick up at home time

All school policies, guidance and maps can be downloaded from the 'About Us' section of the school website.

Hand Washing and Sanitising

All classes have hand washing and/or sanitising facilities and children will be encouraged several times throughout the day to do this.

There are posters and signs throughout the school to remind children of the procedures in place.

All classes have been set up to maintain a 2m distance between staff and pupils. You can use our school video which can be found on our website and YouTube channel so that you can see the different layouts of each classroom and the procedures in place to ensure social distancing and good hygiene throughout the day.

Lunch and Breaks

To ensure a reduced number of children are in the playground during breaks there will be staggered break times.

Classes will have a staggered lunchtime within the normal lunch period and will be supervised by the leadership team and support staff in the dining hall.

Children who are bringing a packed lunch to school are asked to wash this down every night. Where possible, provide items that your child can open without adult assistance to allow safe social distancing to take place between children and adults.

The original lunch menu will now be used and can be accessed from our school website and school app.



Teaching and Learning

The focus of learning in all classes will be literacy, numeracy and health and wellbeing. Our Senior Management Team and class teachers will use a range of assessments, observations and discussions to identify any gaps/strengths in learning and support/challenge will be provided and reviewed on an ongoing basis throughout this session.

PE sessions and lots of outdoor learning will take place this session and it is important that children wear suitable clothing to support this. A rain jacket should be worn to school or kept in the drawstring bag in school.

Other Information

An isolation room has been set up in the school to be used for anyone (adult or child) who starts to display symptoms of Covid-19. **Parents/Carers must contact the school immediately if your child or another family member is displaying symptoms and should not come to school during the recommended self-isolation period.**

For the most up to date information and advice please see the NHS inform website:

<https://www.nhsinform.scot/>

If you or a member of your family have been sent home from school or work with suspected COVID-19 symptoms you should start self-isolating and arrange to be tested straight away.

Please note that if your child has a cold or any other illness that is not related to COVID you should follow normal procedures.

Hand sanitisers are available at all entrances to the school. All children will enter the building via their external classroom door.

All children will have their designated desk and chair but will no longer be required to remain 2m apart from each other. Where possible, desks will face forwards, with pupils sitting side-by-side at shared tables.

Windows and doors will remain open where possible.

Children should not bring toys or any non-essential items to school and will not be able to share their items with others.

School Website - <http://www.st-louises-pri.s-lanark.sch.uk/>

Twitter - @stlouiseprimary

School App -





In order to maintain appropriate distance and to avoid large gatherings of groups, parents/carers will not be permitted to enter the school building at any time and communication should continue to come through the school office by phone or email.

If you have any questions, concerns or suggestions in relation to our phased return, please do not hesitate to contact us by phone or email into the school office:

gw14stlouiseoffice@glow.sch.uk

Please note that all other email addresses set up during lockdown are now no longer being used. We ask that you direct all school emails to the general office account and not to individual accounts of members of staff.

The school will continue to use its website, Twitter and the school app to communicate with all families and signpost to relevant information as and when it becomes available.

As you know things can change on a daily basis at the moment, so it is important to keep checking in regularly to keep up to date with any changes.

We appreciate that there is a lot to consider but hope that if we all work together, we can ensure the continued safety of all until measures change and allow us to update or change our procedures further.

Thank you for your patience and understanding during this very challenging time for us all.

Yours Sincerely

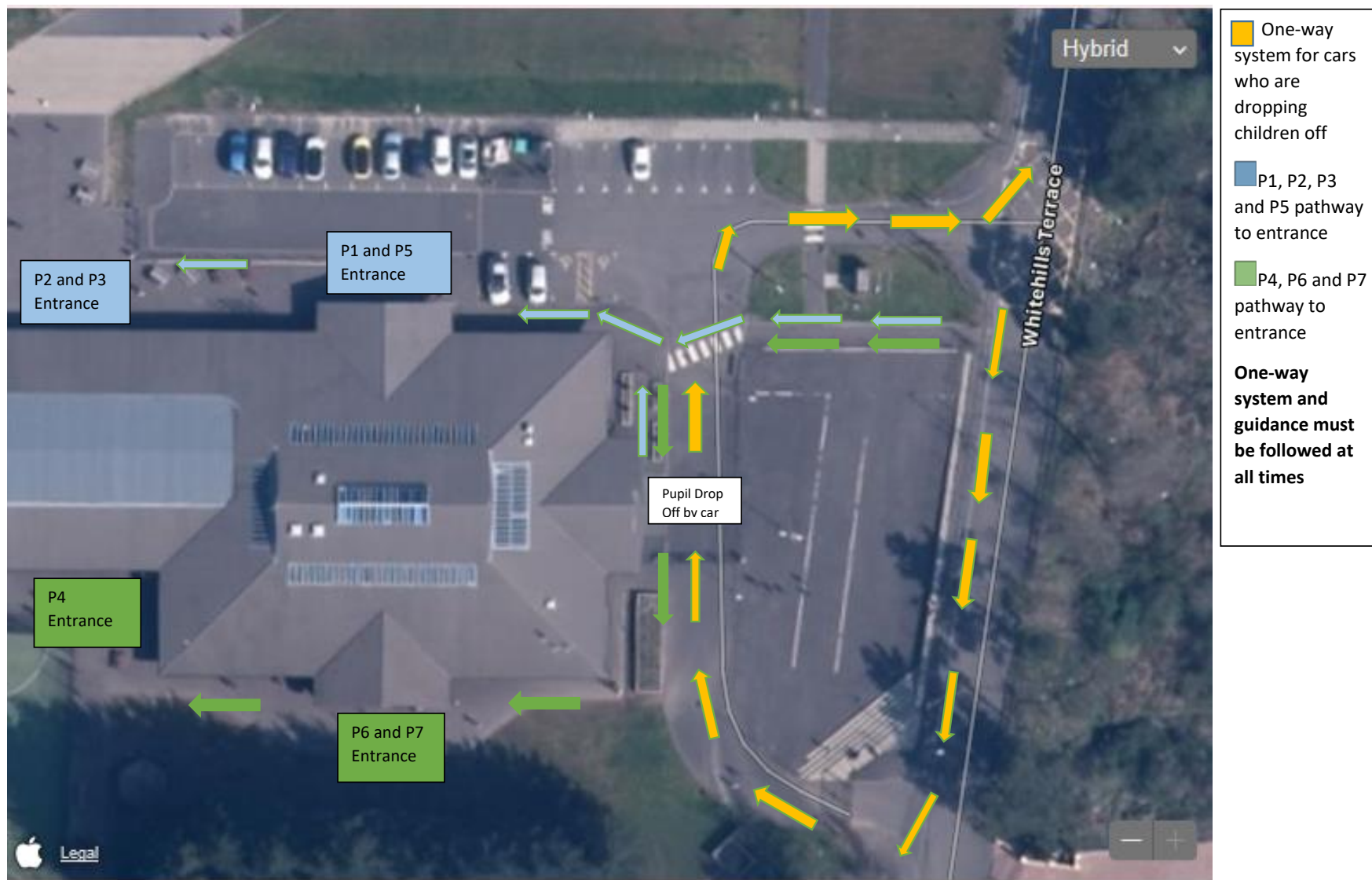
Mrs Mooty and Staff



St. Louise Primary School

St Louise Primary - School Recovery Advice and Guidance - August 2020

Drop Off Map for Start of School Day



School Website - <http://www.st-louises-pri.s-lanark.sch.uk/>

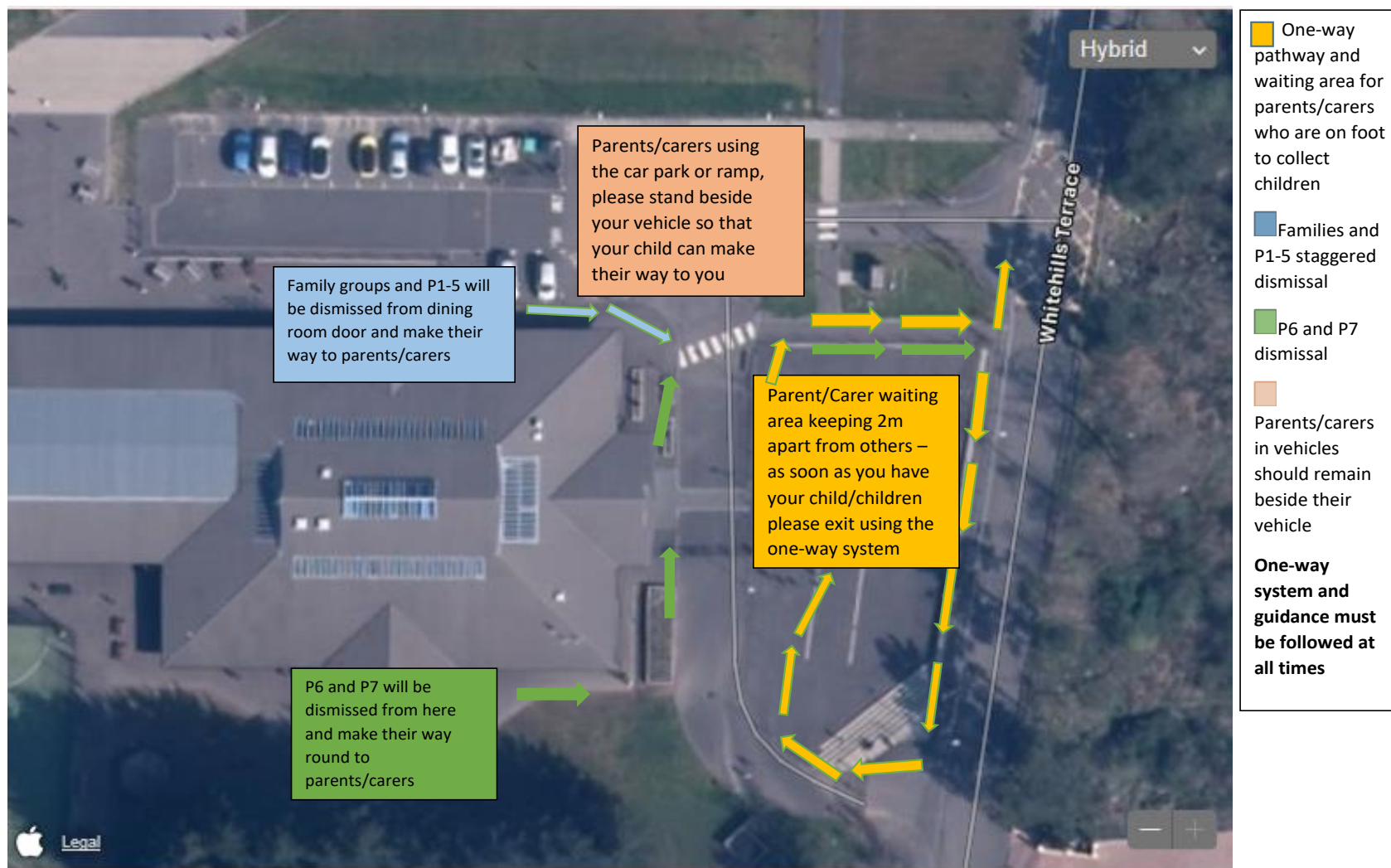
Twitter - @stlouiseprimary

School App -





Pick Up Map for End of School Day



School Website - <http://www.st-louises-pri.s-lanark.sch.uk/>

Twitter - @stlouiseprimary

School App -

