



Dear Parent/Carer

St Louise Guidance - April 2022

Parent/Carer Communication

Where possible we would ask that communication comes through the school office by phone or email.

If you are picking your child up during the school day or early, please notify the school office in advance.

Drop Off and Pick Up

Drop Off

Our one-way drop off and pupil gate opens at **8.15am** for all pupils attending the breakfast club. All other children who are not attending the breakfast club should come to school from **8.30am onwards**. The school day begins at 8.55am and pupils should be in the school grounds by this time.

- If you are travelling by car and using the drop off system on the ramp, I would ask that you are patient. Please ensure that you have passed the second gate before allowing your child to exit the vehicle, **for safety reasons we also ask that you do not overtake other drivers on the ramp at any time**
- We need you to be vigilant and remember that there is a pedestrian crossing at this ramp and children will be crossing frequently
- In order to allow a steady flow and to avoid congestion, we would ask that cars are not double parked on Whitehills Terrace
- As children arrive at school staff will be on hand to direct them

If you need to use the school car park in the morning please ensure that you have parked in a designated space and that your **child follows the safe route into school** using the zebra crossings and does not cut across the car park.

School Website - <http://www.st-louises-pri.s-lanark.sch.uk/>

Twitter - @stlouiseprimary

School App -





Pick Up

Parents/carers who are collecting children should wait in the parent/carer pick up area in the playground at the front of the school.

We will open the school car park and ramp to allow cars to park but ask that you remain next to your vehicle or wait in the designated pick up area and when your child is leaving the building you indicate to them where you are. All cars should be in the school car park by 2.50pm. Please note that the main gates will be closed by this time or earlier if the parent/carer car park is full.

After the SLC taxis have exited, the gates will remain closed until all classes have been dismissed.

- 2.45 - 2.50pm taxi groups will be dismissed
- Just before 2.55pm P1 children will be dismissed
- 2.55pm P2-P5 will be dismissed via the dining room door
- 2.55pm P6 and P7 will be dismissed from their own door and will make their way round to the front of the building
- All children will use the safe crossings to make their way to their parents - **children should not cross the main car park**
- It is important that children have a clear understanding of the arrangements for pick up at home time

Hand Washing and Sanitising

All classes have hand washing and/or sanitising facilities and children will be encouraged several times throughout the day to do this.

PE sessions

Children may have PE indoors or outdoors so children should continue to bring their PE kit in at the beginning of the week in a bag to be kept in school and brought home at the end of the week for cleaning. The school PE kit is a plain white t-shirt (with or without school badge, blue shorts and/or plain dark coloured leggings or joggers.





Other Information

Face coverings are no longer mandatory, but pupils, parents/carers and staff may wish to wear these for personal and/or health reasons and this will be respected at all times.

Children, young people and staff must stay at home and self-isolate if they:

- have symptoms of COVID-19, whether they feel unwell or not
- have tested positive, even if asymptomatic
- are required to self-isolate for any other reason in line with the requirements set out on NHS Inform
- are identified as a close contact and are over 18 years and 4 months and not fully vaccinated

If you have any questions, concerns or suggestions please do not hesitate to contact us by phone or email into the school office: gw14stlouiseprimary@glow.sch.uk

The school will continue to use its website, Twitter and the school app to communicate with all families and signpost to relevant information as and when it becomes available.

Thank you for your continued support throughout the pandemic.

Yours Sincerely

Mrs Mooty and Staff

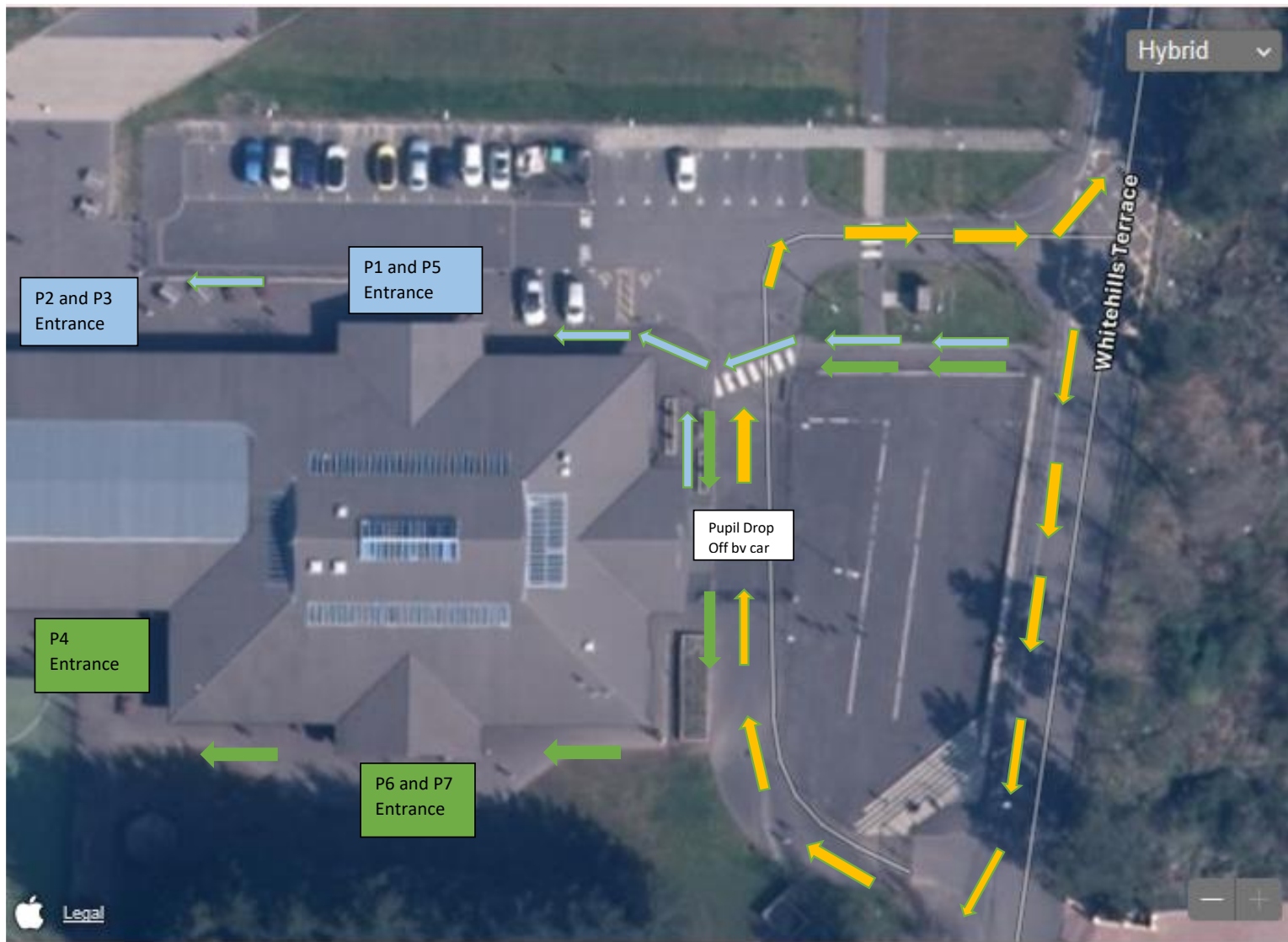




St. Louise Primary School

St Louise Primary - School Recovery Advice and Guidance - April 2022

Drop Off Map for Start of School Day



- ▮ One-way system for cars who are dropping children off
 - ▮ P1, P2, P3 and P5 pathway to entrance
 - ▮ P4, P6 and P7 pathway to entrance
- One-way system and guidance must be followed at all times**

School Website - <http://www.st-louises-pri.s-lanark.sch.uk/>

Twitter - @stlouiseprimary

School App -





Pick Up Map for End of School Day



School Website - <http://www.st-louises-pri.s-lanark.sch.uk/>

Twitter - @stlouiseprimary

School App -

