



Dear Parent/Carer

We have received an update from South Lanarkshire Council with regards to school restrictions around Covid 19. There have been minimal changes to the advice we received in August and many of our measures must remain in place.

As a result, and due to the adverse weather we might see on return after October break, we will be re-introducing our family group dismissal.

To ensure that we comply with the guidance on social distancing and good hygiene, the following arrangements will be in place in St Louise Primary School:

Procedures to be followed by all Parents/Carers

Parent/Carer Communication

Parents/carers will not be permitted to enter the school building at any time unless by prior arrangement with the school and for exceptional reasons. Communication should continue to come through the school office by phone or email.

Only parents/carers who have an agreed appointment time with the school will be permitted to enter the office corridor and **all visitors must be wearing a face covering.**

If your child is late to school or being dropped off after an appointment, they should ring the bell at the main office door for entry to the school.

If you are picking your child up during the school day or early, please notify the school office in advance. When you come to the school use the buzzer system at the main entrance to inform office staff who will bring your child out to you.

Drop Off and Pick Up

Drop Off

Our one-way drop off and pupil gate opens at **8.15am for pupils who are attending the school breakfast club only**, all other pupils should arrive at school between **8.30am and 8.55am. Please note that school day starts at 8.55am and pupils arriving after this time will be marked as late.**

Where possible children should walk to school or to be dropped off near the school where they can make their way to school on foot to try and avoid any large gatherings within/near the school grounds.

School Website - <http://www.st-louises-pri.s-lanark.sch.uk/>

Twitter - @stlouiseprimary

School App -





Only pupils should continue to enter through the pedestrian gate in the morning unless an appointment has been agreed with school/office staff.

- Only staff and people who have an appointment with the school will be allowed to enter and park in the car park, along with any authorised vehicles responsible for transporting children to school (such as taxis organised by SLC and those in receipt of a blue badge)
- Parents/Carers who are in receipt of a blue badge which is clearly displayed in their car should follow the one way system in the morning and will be permitted to park in one of the spaces in the car park
- If you are travelling by car and using the drop off system on the ramp, I would ask that you are patient. Please ensure that you have passed the second gate before allowing your child to exit the vehicle, **for safety reasons we also ask that you do not overtake other drivers on the ramp at any time**
- We need you to be vigilant and remember that there is a pedestrian crossing at this ramp and children will be crossing frequently
- In order to allow a steady flow and to avoid congestion, we would ask that cars are not double parked on Whitehills Terrace
- As children arrive at school staff will be on hand to direct them

Children should enter the school playground and congregate at their door entrance and in the event of adverse weather, the doors will be open to allow children to go straight to class.

Pick Up

At the end of the school day we would advise that parents/carers where possible arrange to meet their children outside of the school grounds and walk to and from school.

For those who this is not possible, we would ask that in the first instance you park in car parks away from the school and arrange to meet or walk to the school.

If you need to use the school grounds to pick up your child please only send 1 adult to do this, **remembering to keep 2m apart from others and ensure you are wearing a face covering.**

- At the end of the school day there will be a one-way flow in to and out of the playground for pick up. Parents/carers should enter by the top gate, make their way into the playground area opposite the main entrance and stand in one of the markings. Once you have collected your child/children you should then make your way out of the exit gate next to the main car park gate.

School Website - <http://www.st-louises-pri.s-lanark.sch.uk/>

Twitter - @stlouiseprimary

School App -





- We will open the school car park and ramp to allow cars to park but ask that you remain next to your vehicle or wait in the designated pick up area and when your child is leaving the building you indicate to them where you are. All cars should be in the school car park by 2.45pm. Please note that the main gates will be closed once the car park is full or by 2.45pm.

After the SLC taxis have exited, the gates will remain closed until all classes have been dismissed.

- P1-5 children will be dismissed through the dining room door with the exception of P6 and P7 and a staggered approach used to enable continued adherence to the social distancing rules.

- 2.45pm Taxi groups will be dismissed
- 2.50pm Family Groups and P1 children will be dismissed
- 2.50-2.55pm all other children from P2-P5 will be dismissed a class at a time from the dining room
- 2.55pm P6 and P7 will be dismissed from their own door and will make their way round to the front of the school
- All children will use the safe crossings to make their way to their parents - children should not cross the main car park
- It is important that children have a clear understanding of the arrangements for pick up at home time

Please note that family groups will be identified as siblings. If you have children who need to leave within a family group and they are not a sibling, please notify the school office.

Staff will remain at the front of the school building until 2.55pm to ensure children are dismissed safely.

Please note that all parents/carers who are dropping off or picking up a child at school should wear a face covering.

School Website - <http://www.st-louises-pri.s-lanark.sch.uk/>

Twitter - @stlouiseprimary

School App -





Hand Washing and Sanitising

All classes have hand washing and/or sanitising facilities and children will be encouraged several times throughout the day to do this.

There are posters and signs throughout the school to remind children of the procedures in place.

All classes have been set up to maintain a 2m distance between staff and pupils and this will continue until the review in September.

Lunch and Breaks

Classes will have a staggered lunchtime within the normal lunch period and will be supervised by the leadership team and support staff in the dining hall.

Children who are bringing a packed lunch to school are asked to wash this down every night. Where possible, provide items that your child can open without adult assistance to allow safe social distancing to take place between children and adults.

The lunch menu can be accessed from our school website and school app.

Teaching and Learning

We will continue with a clear focus on literacy, numeracy and health and wellbeing as well as all other curricular areas across this session. Our Senior Management Team and class teachers will use a range of assessments, observations and discussions to identify any gaps/strengths in learning and support/challenge will be provided and reviewed on an ongoing basis throughout the session.

PE sessions (both indoors and outdoors) as well as lots of outdoor learning will continue to take place this session and it is important that children wear suitable clothing to support this.

Children should continue to bring a drawstring/separate bag with them at the beginning of the week with PE shorts and plain leggings/joggers and their t-shirt, this will remain in school to be used across the week and then sent home at the end of the week to be cleaned and brought back the next week.





Other Information

Self-isolation /Contact Tracing: Test and Protect Update:

Close contact tracing will focus towards home and social interactions, including sleepovers. Therefore, only if someone is identified by Test and Protect as being a close contact of a positive case will the new self-isolation rules apply as follows:

- If anyone in your household develops symptoms of Covid 19, all household members must start self-isolating, the person with symptoms should get a PCR test and all household members self-isolate until the result comes back
- If the results are positive then all other household members should book a PCR test and continue to self-isolate until the result comes back

If the result of your test is negative then the following rules apply:

- Adults who are double vaccinated and have a negative PCR will no longer have to isolate if a contact of a positive case
- Children and young people 5 to 18 years will not have to isolate for 10 days so long as they remain asymptomatic and have a negative PCR
- Under 5's will not have to isolate so long as they remain asymptomatic but there is no mandatory requirement for them to have a negative PCR

For the most up to date information and advice please see the NHS inform website:

<https://www.nhsinform.scot/>

When there is a positive case of Covid 19 within the school, parents/carers of the class group will be contacted by the school app.

You do not need to do anything unless your are contacted directly by Test and Protect.

Hand sanitisers are available at all entrances to the school. All children will enter the building via their external classroom door.

Windows and doors will remain open where possible.

Children should **not bring toys or any non-essential items** to school and will not be able to share their items with others.

School Website - <http://www.st-louises-pri.s-lanark.sch.uk/>

Twitter - @stlouiseprimary

School App -





Lateral Flow Testing

All staff working in our school have been invited to participate in the COVID19 asymptomatic testing programme using lateral flow testing kits. Staff are able to test twice weekly at home and receive results within 30 minutes of a positive, negative or void result. By testing twice weekly, staff members who have coronavirus but show no symptoms can be identified at the earliest opportunity and reduce the overall risk of transmission in our school.

If you have any questions, concerns or suggestions, please do not hesitate to contact us by phone or email into the school office: gw14stlouiseoffice@glow.sch.uk

The school will continue to use its website, Twitter and the school app to communicate with all families and signpost to relevant information as and when it becomes available.

As you know things can change on a daily basis at the moment, so it is important to keep checking in regularly to keep up to date with any changes.

We appreciate that there is a lot to consider but hope that if we all work together, we can ensure the continued safety of all until measures change and allow us to update or change our procedures further.

Thank you for your patience and understanding during this very challenging time for us all.

Yours Sincerely

Mrs Mooty and Staff

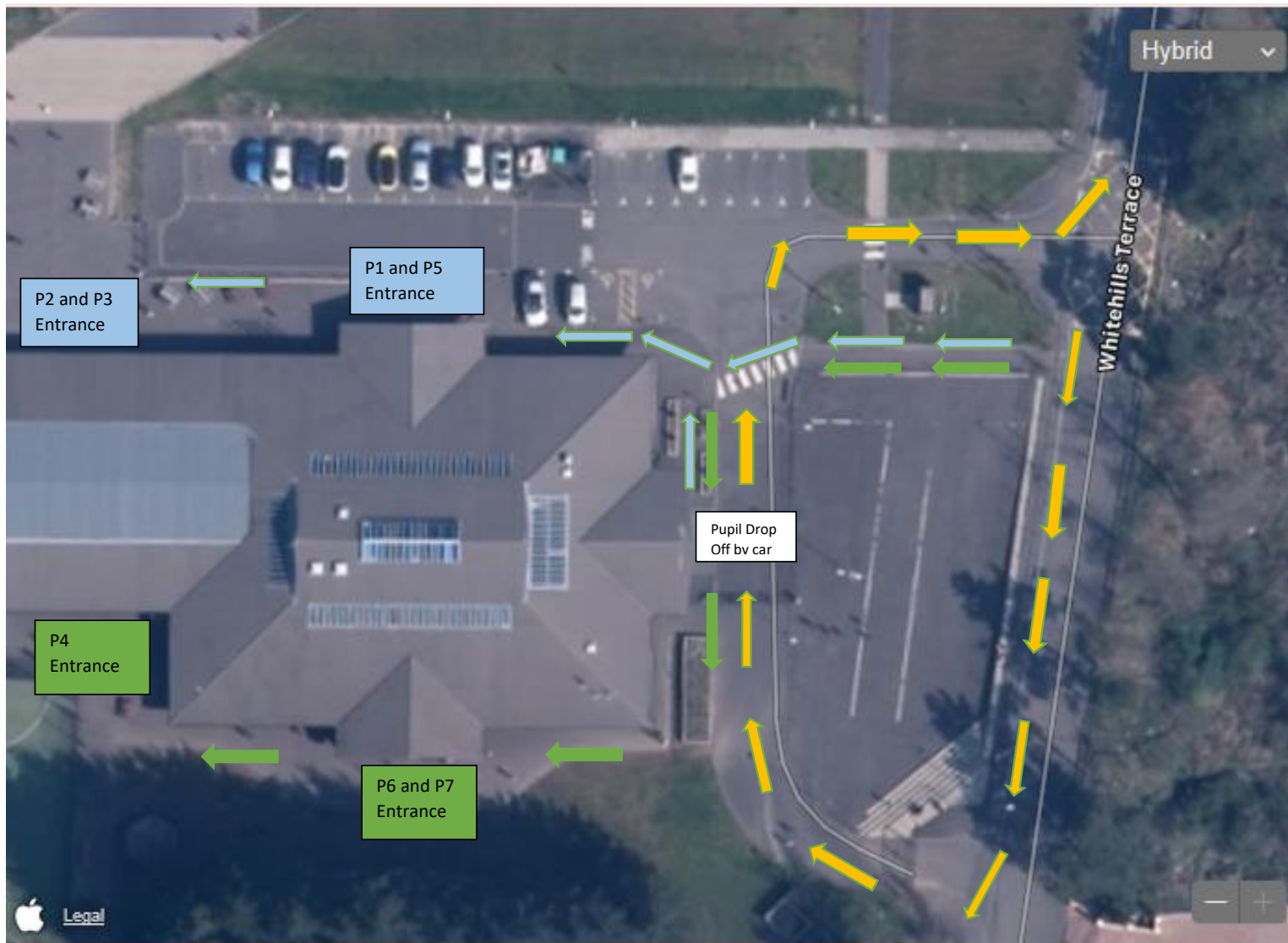




St. Louise Primary School

St Louise Primary - Guidance - October 2021

Drop Off Map for Start of School Day



- ▬ One-way system for cars who are dropping children off
 - ▬ P1, P2, P3 and P5 pathway to entrance
 - ▬ P4, P6 and P7 pathway to entrance
- One-way system and guidance must be followed at all times**

School Website - <http://www.st-louises-pri.s-lanark.sch.uk/>

Twitter - @stlouiseprimary

School App -

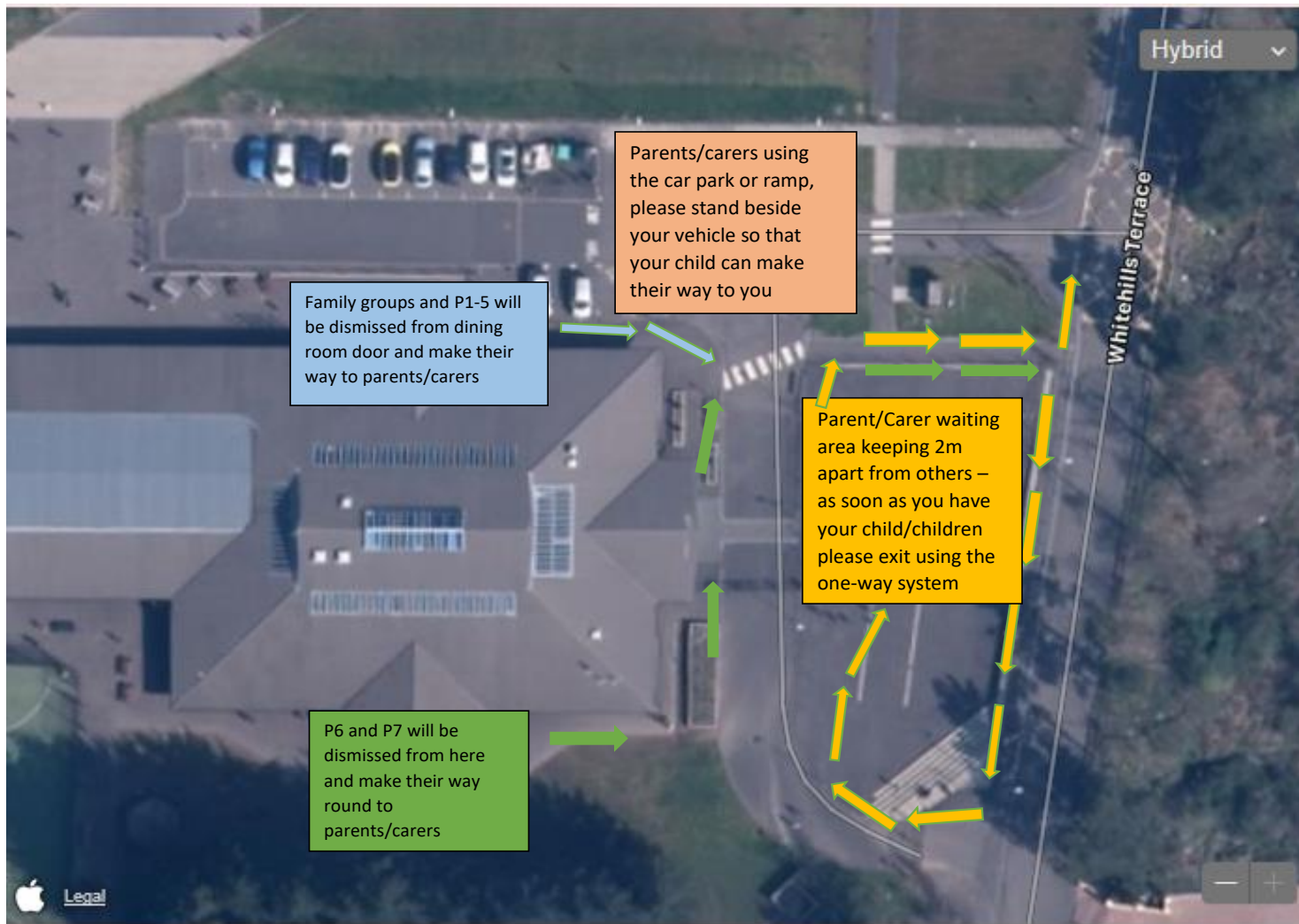




St. Louise Primary School

St Louise Primary - Guidance - October 2021

Pick Up Map for End of School Day



- One-way pathway and waiting area for parents/carers who are on foot to collect children
 - Families and P1-5 staggered dismissal
 - P6 and P7 dismissal
 - Parents/carers in vehicles should remain beside their vehicle
- One-way system and guidance must be followed at all times**

School Website - <http://www.st-louises-pri.s-lanark.sch.uk/>

Twitter - @stlouiseprimary

School App -

