



Dear Parent/Carer

Revised School Recovery Plan - August 2020

I hope that you and your family are well and you have managed to enjoy some time to relax over the summer.

Last week, the Scottish Government confirmed the decision to re-open schools full time in August 2020. On Monday 3rd August, Mr Tony McDaid (Executive Director of South Lanarkshire Council's Education Resources) issued a letter outlining the local authority's model of recovery for schools which explained the managed re-opening of schools between Wednesday 12th and Friday 14th August 2020, with all children back at school full time on Monday 17th August 2020.

Please see the updated guidance below for St Louise Primary School; where you will see that some of the information we issued in June remains the same but some has been changed or updated.

I understand that some parents and children may have concerns about schools re-opening, but please be reassured that the safety of our pupils and staff is paramount in all our decision-making and follows the advice that we have received from the Scottish Government and South Lanarkshire Council.

To ensure that we comply with the guidance on social distancing and good hygiene, the following arrangements are in place in St Louise Primary School:

Patterns of Attendance for the Managed Return to School for P1-7

Tuesday 11 th August 2020	In-service Day - Pupils should not attend
Wednesday 12 th August 2020	Only Primary 1 pupils will attend - please see information below for further details
Thursday 13 th August 2020	Primary 1 to 3 pupils should attend
Friday 14 th August 2020	Primary 4 to 7 pupils should attend
From Monday 17 th August 2020	All pupils should attend every day

School Website - <http://www.st-louises-pri.s-lanark.sch.uk/>

Twitter - @stlouiseprimary

School App -





Arrangements for P1 on Wednesday 12th August 2020

- Parents can use the school car park on this day only to drop off pupils at 10am at the P1 entrance where they will be met by school staff and taken into their classroom
- In line with Scottish Government and SLC guidance, parents will not be permitted to come into the classroom with their child
- Staff will take some photographs of the P1 children throughout the first day and we will make these available to parents/carers as quickly as possible
- Pupils should be collected by **1 adult at 2.30pm** from the P1 entrance door - Staff will be on hand to show you where to wait
- **Please note from Thursday 13th August the following guidance is for the whole school and should be used for dropping off and picking up children**

Traffic Management from Thursday 13th August (Please see maps at the end of this document for visual guidance)

Scottish Government and SLC advice recommend that children should not travel to school in cars with other households.

Drop Off - In order to ensure a staggered approach to this and to maintain a distance between children and staff we will operate a soft start in the morning, the time frame for children to be dropped off at school will be 8.50-9.05am each morning. **Please do not send or drop your child off before 8.50am as the school will not be open.**

- In the first instance we are asking that where possible families make arrangements for children to walk to school or to be dropped off near the school where they can make their way to school on foot to try and avoid any large gatherings within the school grounds.
- Only staff and people who are visiting the school will be allowed to enter the car park, along with any authorised vehicles responsible for transporting children to school (such as taxis organised by SLC)
- Parents/Carers whose child/children are in receipt of a blue badge which is clearly displayed in their car should follow the one way system in the morning and will be permitted to park in one of the spaces in the car park
- We ask that all drivers reverse into car park spaces to ensure social distancing when exiting from the driver's side door
- If you are travelling by car and using the drop off system on the ramp, I would ask that you are patient to allow only one family to drop off at a time. We also need you to be vigilant and remember that there is a pedestrian crossing at this ramp and cars should stop to allow children to cross if they are at the crossing.

School Website - <http://www.st-louises-pri.s-lanark.sch.uk/>

Twitter - @stlouiseprimary

School App -





- In order to allow a steady flow and to avoid congestion, we would ask that cars are not double parked on Whitehills Terrace.
- As children arrive at school staff will be on hand to direct them, P1 and P5 pupils should walk round past the dining room door, into the school playground and enter by the first door on their left which is nearest to the gate
- P2 and P3 children should walk round past the dining room door, into the school playground and enter by the second door on their left which is up near the bike shed
- P4 should walk round past the office into the senior playground/forest area and enter through the second door on their right next to the MUGA pitch
- P6 and P7 should walk round past the office into the senior/forest area and enter through the first door on their right next to the forest
- All children should use the hand sanitisers to sanitise their hands which can be found at all entrances, remove their shoes and will be directed by staff on what to do as they enter the classroom

Pick Up

At the end of the school day we would advise that parents/carers where possible arrange to meet their children outside of the school grounds and walk to and from school.

For those who this is not possible, we would ask that in the first instance you park in car parks away from the school and arrange to meet or walk to the school.

If you need to use the school grounds to pick up your child please only send **1 adult** to do this, **remembering to keep 2m apart from others.**

- At the end of the school day there will be a one-way flow in to and out of the playground for pick up. Parents/carers should enter by the top gate, make your way into the playground area opposite the main entrance and stand in one of the markings. Once you have collected your child you should then make your way out of the exit gate next to the main car park gate.
- We will open the school car park and ramp to allow some cars to park but ask that you remain next to your vehicle and when your child is leaving the building you indicate to them where you are.
- All children will be dismissed through the dining room door with the exception of P6 and P7 and a staggered approach used to enable continued adherence to the social distancing rules.
- 2.45pm All family groups will be dismissed
- 2.50pm P1, P2 and P3 will be dismissed
- 2.55pm P4 and P5 will be dismissed
- 2.55pm P6 and P7 will be dismissed from their own door and will make their way round to the front door

School Website - <http://www.st-louises-pri.s-lanark.sch.uk/>

Twitter - @stlouiseprimary

School App -





- All children will use the crossing to make their way to their parents
- It is important that children have a clear understanding of the arrangements for pick up at home time.

The janitor and school staff will be on supervision during drop off and pick up times and will ask parents to abide by these safety measures. We are all working together to try and ensure the safety of everyone and we understand that we are all being asked to change the way we do things and this is hard. I would ask for your full cooperation at this time and ask you to respect the staff who will be on hand to support. If we have parents/carers who are not following the essential safety rules we are putting in place you will not be able to use the school grounds and will be asked to park or wait out with the school grounds.

Things to Note for Pupil Return

- Parents/carers are asked to phone or email the school, rather than visiting the school office and this will be reviewed on an ongoing basis
- If the office have arranged for you to come in to drop off or pick something up we ask that you follow the school rules on hand hygiene and social distancing which are clearly displayed on the front window - only one family at a time in the office bubble
- Any children who require medicine to be kept in school and administered by school staff should contact the school office who will provide you with a form by email to complete and hand in along with the medicine which must be in date and prescribed and labelled for your child only
- All children should wear full school uniform when attending school which they should change out of and get washed after they return home
- All children should have soft black shoes to change into when in class
- Children **should not** bring a school bag or pencil case in the first week as all children will be supplied with their own set of resources in their own tray to use throughout this time
- From Monday 17th August children will be able to bring their own school bag and pencil case but please note that no toys or non-essential items should be brought in
- The only items children should bring to school in the first week are a packed lunch if they are having one, black soft shoes, a water bottle and a snack for break time
- Initially, children will not need to bring a PE kit so that there is no need for them to change clothes and this aspect of the curriculum will be outdoors - we will inform you of your child's PE days when these have been set and guidance around PE kits
- An appropriate outdoor jacket should be worn - weather dependent

School Website - <http://www.st-louises-pri.s-lanark.sch.uk/>

Twitter - @stlouiseprimary

School App -





- At the moment there will be no breakfast club in the morning, but this will be reviewed at a later date and when further advice and guidance is received

Hand Washing and Sanitising

All classes have hand washing and/or sanitising facilities and children will be encouraged several times throughout the day to do this.

There are posters and signs throughout the school to remind children of the procedures in place.

All classes have been set up to maintain a 2m distance between staff and pupils. You can use our school video which can be found on our website and YouTube channel so that you can see the different layouts of each classroom and the procedures in place to ensure social distancing and good hygiene throughout the day.

Lunch and Breaks

To ensure a reduced number of children are in the playground during breaks there will be staggered break times.

Classes will have a staggered lunchtime within the normal lunch period and will be supervised by the leadership team and support staff in the dining hall.

Children who are bringing a packed lunch to school are asked to wash this down every night. Where possible, provide items that your child can open without adult assistance to allow safe social distancing to take place between children and adults.

The original lunch menu will now be used and can be accessed from our school website.

Teaching and Learning

For the first few days, the focus for learning will be Health and Wellbeing, with activities designed to help children feel relaxed and comfortable with being back at school. They will have opportunities to rebuild relationships with staff and friends.

Teachers will begin to determine where children are in their learning through observation, discussion and informal assessments over the next two/three weeks. All areas of the curriculum will be covered in line with SLC and Scottish Government advice.

All classes will work on a mini topic of 'Me and My Wellbeing' for the first few weeks of school, which will focus on emotional wellbeing and attachment.

School Website - <http://www.st-louises-pri.s-lanark.sch.uk/>

Twitter - @stlouiseprimary

School App -





Classes will be allocated different areas in the playground to promote distancing between groups and for outdoor learning activities.

Other Information

An isolation room has been set up in the school to be used for anyone (adult or child) who starts to display symptoms of Covid-19. **Parents/Carers must contact the school immediately if your child or another family member is displaying symptoms and should not come to school during the recommended self-isolation period.**

Hand sanitisers are available at all entrances to the school. All children will enter the building via their external classroom door.

All children will have their designated desk and chair but will no longer be required to remain 2m apart from each other. Where possible, desks will face forwards, with pupils sitting side-by-side at shared tables.

Windows and doors will remain open where possible.

Children should not bring toys and any non-essential items to school and will not be able to share their items with others.

Assemblies and musical instrument tuition cannot take place for now.

After-school clubs will not resume initially when schools re-open, but we will look at ways to provide these in line with the guidance as we move forward.

In order to maintain appropriate distance and to avoid large gatherings of groups, parents/carers will not be permitted to enter the school building at any time and communication should continue to come through the school office by phone or email.

If you have any questions or concerns in relation to our phased return in August, please do not hesitate to contact us by phone or email into the school office:

gw14stlouiseoffice@glow.sch.uk

When our school re-opens on Tuesday 11th August, we will respond to any emails and phone messages received as soon as we can.

Please note that all other email addresses set up during lockdown are now no longer being used. We ask that you direct all school emails to the general office account and not to individual accounts of members of staff.

I hope this information helps to ease any anxieties that you may have had about schools re-opening.

School Website - <http://www.st-louises-pri.s-lanark.sch.uk/>

Twitter - @stlouiseprimary

School App -





St. Louise Primary School

St Louise Primary - School Recovery
Advice and Guidance - August 2020

The school will use its website, Twitter and the school app to continue to communicate with all families and signpost to relevant information as and when it becomes available.

As you know things can change on a daily basis at the moment, so it is important to keep checking in regularly to keep up to date with any changes.

We appreciate that there is a lot to consider but hope that if we all work together, we can ensure the continued safety of all until measures change and allow us to update or change our procedures further.

Thank you for your patience and understanding during this very challenging time for us all. We cannot wait to see the children back in school!

Yours Sincerely

Mrs Mooty and Staff

School Website - <http://www.st-louises-pri.s-lanark.sch.uk/>

Twitter - @stlouiseprimary

School App -

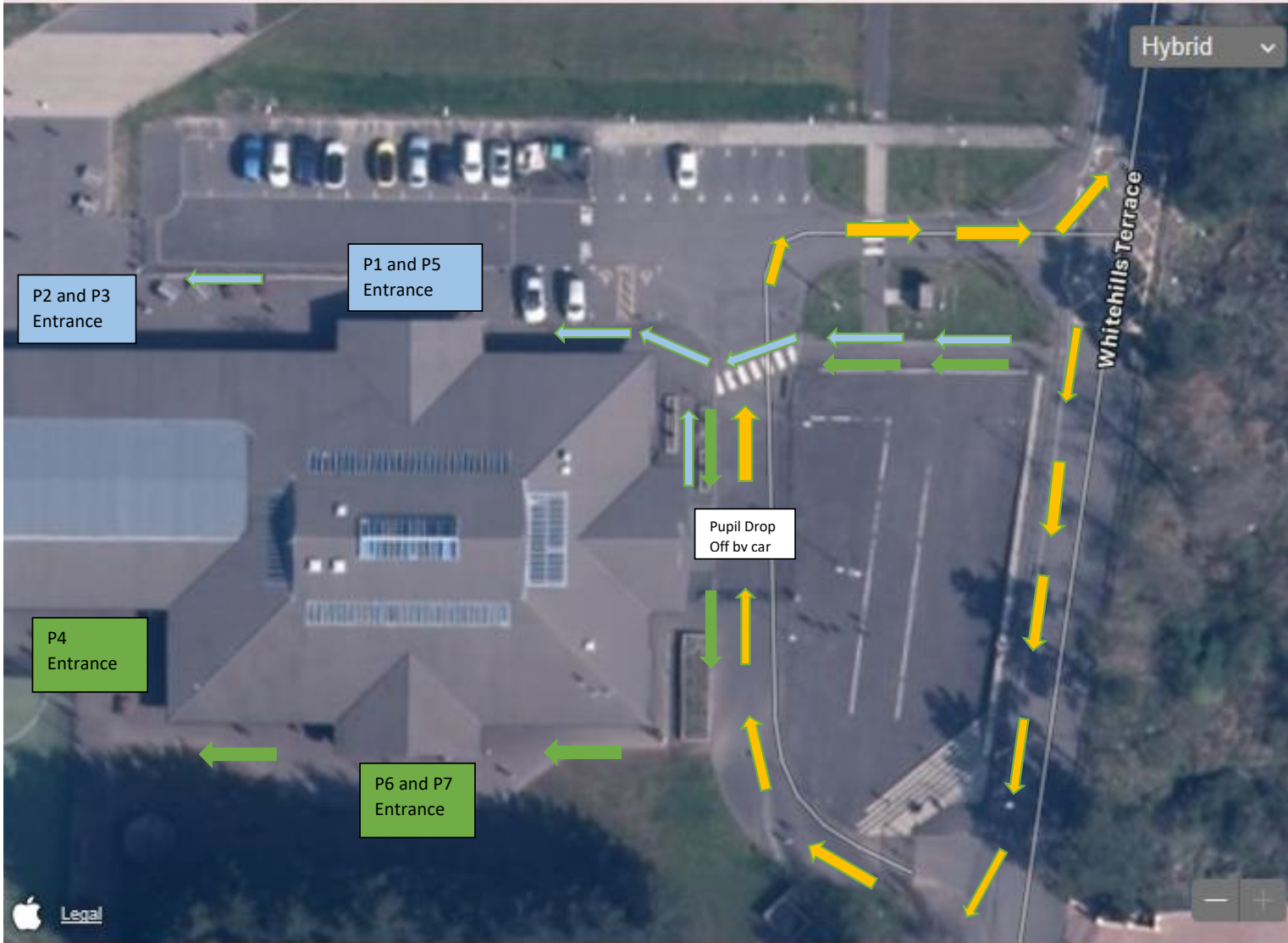




St. Louise Primary School

St Louise Primary - School Recovery Advice and Guidance - August 2020

Drop Off Map for Start of School Day



- ▬ One-way system for cars who are dropping children off
 - ▬ P1, P2, P3 and P5 pathway to entrance
 - ▬ P4, P6 and P7 pathway to entrance
- One-way system and guidance must be followed at all times**

School Website - <http://www.st-louises-pri.s-lanark.sch.uk/>

Twitter - @stlouiseprimary

School App -

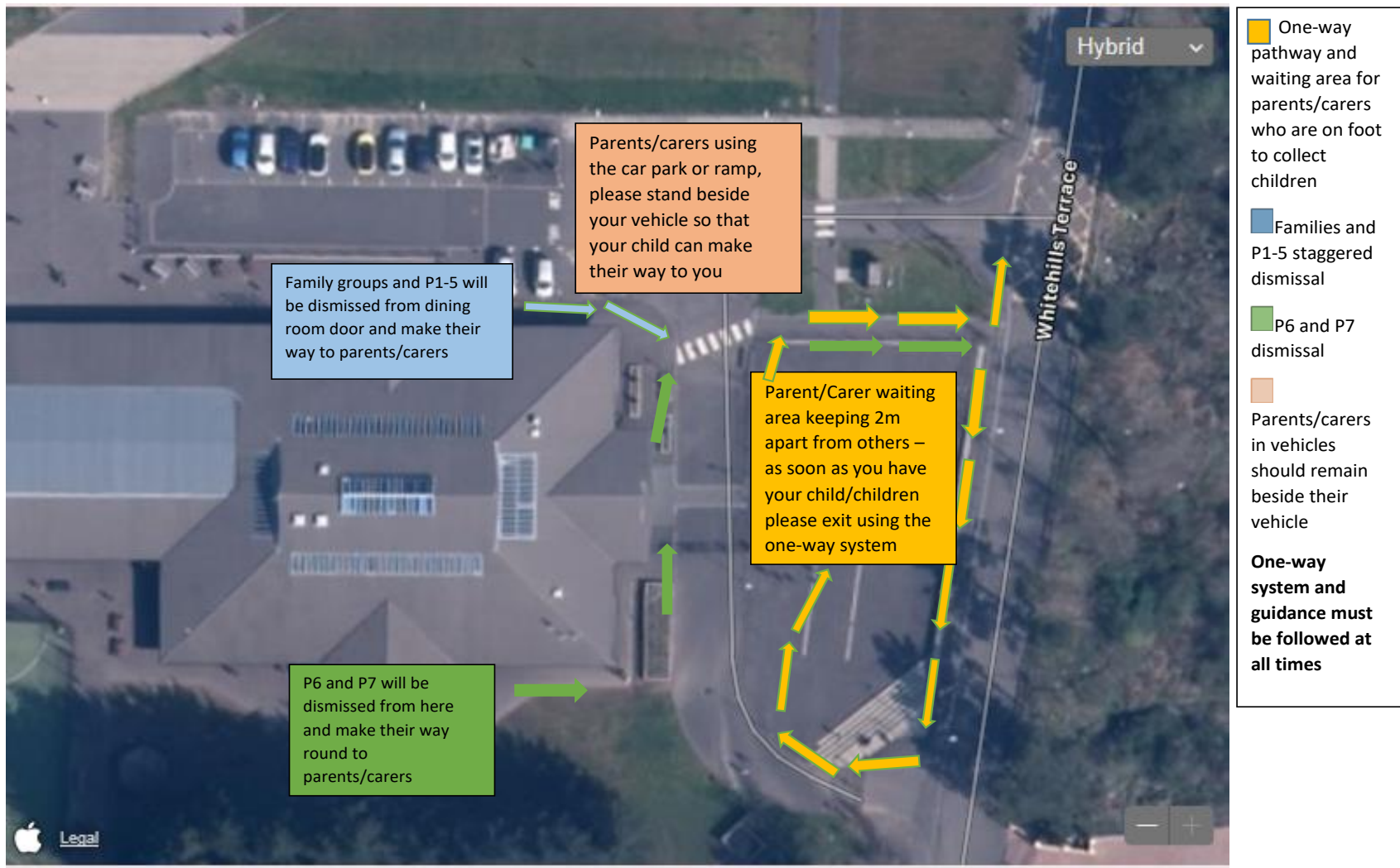




St. Louise Primary School

St Louise Primary - School Recovery Advice and Guidance - August 2020

Pick Up Map for End of School Day



School Website - <http://www.st-louises-pri.s-lanark.sch.uk/>

Twitter - @stlouiseprimary

School App -

